

The narrow lane off North Main Road leads to the Watson Farm. In the summer the dirt road is nearly hidden from view by a thick, emerald canopy of vegetation. You'll find a grassy area reserved for parking. A wooden swing hangs from the giant tulip poplar that stands in front of the main house, welcoming visitors to the grounds. The sounds of modern civilization are dimmed by the trees and the squawks and chirps of the various birds living on the land. Stone walls surround the barn and main house like sentinels of another age.

The trails along the property are mowed and easy to walk. Turkeys and chickens strut casually in their pens while one of the farm dogs, Dublin, sniffs around their cages. But more interesting are the cattle whose coats are a dusty brick red. These cattle, your guide will tell you, are a tri-purpose breed known as Red Devon. They move slowly, swishing their tails back and forth against a scenic ocean backdrop.

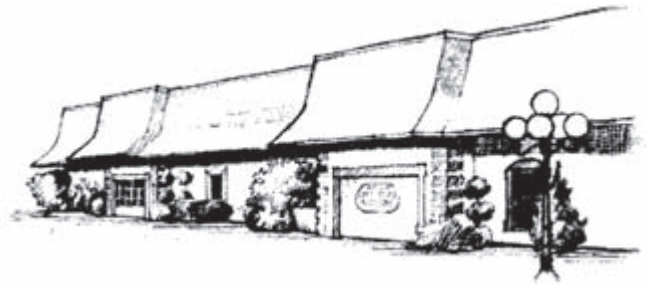
These are only a few glimpses of the two-mile trail that surrounds the property. Watson Farm is located on 455 North Main Rd. and is open to visitors Tuesday, Thursday and Sunday, from 1 to 5 p.m. between June 1 and Oct. 15. Admission is \$4 for the general public and is free for Jamestown residents and members of Historic New England.

Rose Island Lighthouse

If the summer heat leaves you longing for the ocean breeze, a trip to the Rose Island Lighthouse might be in order.

Just south of the Newport Pell Bridge, Rose Island is a small strip of land covered in vegetation, with a solitary lighthouse perched on the island tip. During its long history, the island has had many uses. In World Wars I and II, Rose Island was used as a storage area for explosives by the Navy Torpedo Station. The federal government, after World War II, declared that the island, except its lighthouse, was surplus. While it was no longer in use, vegetation spread like wildfire over the island. The lighthouse remained in operation until 1970 and was then abandoned, leaving the island vulnerable to vandals. In 1984, the Rose Island Lighthouse Foundation was established to restore and operate the lighthouse.

To get there you will need to catch the Jamestown-Newport Ferry. Buy a ticket at Conanicut Marine Ship Store, located at 20 Narragansett Ave. in Jamestown. A roundtrip all-day pass across the bay will cost \$16.50 and will allow you to get



BLUE SUN ULTRA SERVICE

165 Frenchtown Rd, North Kingstown, RI 02852
884-7177

- Tune-ups
- Electrical Repairs
- Front-End Alignment
- Brakes
- Exhaust Systems
- Air Conditioning

24 Hour Towing • State Inspections
4 Radio Dispatched Trucks, Car Carrier Service

MACS' AUTO SERVICE AUTO BODY

165 Frenchtown Rd, North Kingstown, RI 02852
884-2300 (days only)

www.autoserviceautobodyri.com

Car Rentals

Lic. No. 426

- Frame Straightening
- Collision Work
- Painting
- Insurance Estimates
- Glass Work
- Foreign & Domestic

CERTIFIED
Collision Analyst
Full Service Auto Center

Anthony Victoria, Owner



5805 Post Road, East Greenwich, RI
885-5500

39 Stilson Road
Richmond, RI
539-9550

39 Walts Way
Narragansett, RI
782-8484

- Easy Ground-level Access to Units
- Wide, Steel Roll-up Doors
- You Lock It, Keep the Key
- Access 7 Days a Week
- Low Month-to-Month Rental
- Floor to Ceiling Steel Partitions
- Facility Hours: 5 a.m. - 8 p.m.
- Moving & Storage Boxes
- Packing Supplies



www.selfstoragecenterri.com

