

PREFERRED PROPERTIES

STUNNING WATERFRONT GEM



JAMESTOWN. Sweeping water views mesmerize you from this graceful, 4,857 sq. ft. custom home. On .70 acres, with 106 ft. of beach frontage, a dock and moorings, the three-bedroom, six-bathroom home has dramatic living spaces, a fabulous curved window wall, chef's kitchen, library, gorgeous master suite with his and her bathrooms and, a downstairs media/game room that opens to the water. \$3,399,000

WEST PASSAGE WATERFRONT RETREAT



JAMESTOWN. Breathtaking sunsets and water views of the West Passage of Narragansett Bay enthrall you from this 3,200 sq. ft., three-bedroom, three-bath home on a private 12-acre setting with 200 ft. of beach frontage. This Caribbean-like home enjoys the feeling of a resort with warm, inviting living areas, a spacious kitchen with a fieldstone fireplace, fabulous outdoor entertainment decks, a pool, tennis court, mooring and, the potential for a dock. \$3,295,000

HIGHLAND MEADOW MANOR



JAMESTOWN. Close to town and Mackerel Cove, this handsome 4,500 sq. ft. shingle - style home has lovely exterior detail, beautiful interior finishes, a fabulous kitchen, wonderful sun room, three fireplaces and, a master bedroom suite with a deck. A lower level living area has a bedroom, bath and media room. A detached two-car garage has a separate office. \$1,795,000

CLASSIC WESTWIND COTTAGE



JAMESTOWN. Just steps from a deeded right-of-way to the beach, this distinctive 5,000 sq. ft. shingle-style, four-bedroom home, including a guest suite above the garage, has nine foot ceilings, beautiful millwork, a wonderful sunroom/porch and lovely hardwood floors. \$1,599,000

WEST REACH WATERVIEW



JAMESTOWN. Set on a park-like 1.85 acres, with frontage on Rosamond Pond and deeded beach rights, this tastefully finished three-bedroom contemporary has sweeping water views of the West Passage, a fabulous kitchen, great room with fireplace, entertainment deck and, gracious master suite. \$1,495,000

WATERFRONT SHORES CONTEMPORARY



JAMESTOWN. Beautiful water and Jamestown Bridge views delight you from this seaside home with 75 ft. of beach frontage, an open floor plan, wonderful kitchen, expansive windows and decks. A lower level family room opens to the yard. An dock application is in process. Rights to two moorings. \$1,375,000

WATERFRONT BUILDING SITE



JAMESTOWN. Engineering for a new 4-bedroom ISDS is in process for this .57 acre waterfront parcel with about 65 ft. of frontage on the East Passage just north of the Newport bridge. The vacant land has a freestanding garage. A new well is also in process. \$1,195,000

SUNSET FARM VICTORIAN



JAMESTOWN. Great sunset and seasonal water views from spacious 4,312 sq. ft. four-bedroom home on 1.84 acres with a separate guest suite above the garage, a chef's kitchen, living room with fireplace, family room and a pool. \$899,500

CAPTIVATING SHORES CHIC



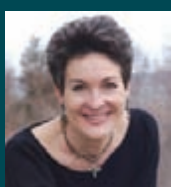
JAMESTOWN. Beautifully renovated, three-bedroom home on landscaped .39 acres close to the beach. Dramatic living room with cathedral ceilings, granite-faced fireplace, tastefully finished custom kitchen with granite counters and new first floor master suite. \$699,500

BEAUTIFUL BUILDING SITE



JAMESTOWN. This private 1.46 acre lot is bordered on two sides by a stone wall. Protected by a deeded natural buffer from neighboring properties to the east and south, it has an irrigation well on-site. ISDS engineering to be obtained before closing. \$375,000

“WE MAKE DREAMS COME TRUE, ONE HOME AT A TIME”



Gloria Kurz
Principal

REALTORS
Greer Becroft
Michelle Datoli
Maureen Dunn-Packer
Cort Facticeau
Cathy Kennedy Harvey
Jackie Perrett

**Mansions
& Manors**

The Personalized Real Estate Service

www.mansionsmanors.com

7 FERRY WHARF
JAMESTOWN, RI 02835
401.423.7000

59 BELLEVUE AVENUE
NEWPORT, RI 02840
401.848.5555