

Schock Gallery paves the way for fine artists

By Michaela Kennedy

Since its grand opening on the festive night of the tree lighting last December, the Schock Gallery has unfurled the dream venue of five local artists. "We like to say that the Newport area's best gallery is found at the East Ferry waterfront," says David Schock, director of the cooperative gallery.

A collage of color meets the eye upon entering the Schock Gallery. Paintings and photographs swell from the bright peach walls of the deep room. From shell-seeking girls cast in oil to fine art photographs on canvas of local boating scenes, the space is dedicated to the business, and the enjoyment, of beautiful art.

The gallery was created with the purpose of showcasing the artistic works of five professionals who brought the idea to fruition, agree the partners. "The gallery is about each artist's individual work," Schock says. "This is essentially a fine arts gallery that does outreach programs, put together by five artists."

The five that make up the cooperative recalled how the idea came about to open the gallery. Schock was the Director of the Randall Art Gallery at the time, and the original idea was to create a similar arrangement at the old Randall space. The new artists were unanimous, however, that a location more central to the pedestrian traffic in Jamestown was essential to forming a group effort.

Shortly thereafter, photographers Pat Tuff and Kate Petrie learned about the new space becoming available, and told Schock. Landscape painter Barbara Hutchison and pastel artist Cynthia Blair also came on



Kate Petrie, David Schock, Pat Tuff, Cynthia Blair and Barbara Hutchinson, left to right, combined their talents to open the Schock gallery on the Jamestown waterfront. Photo by Michaela Kennedy

board, and the group was formed.

With no other gallery of its kind on the island, the team jumped on the opportunity for a waterfront showcase. "It all happened in an hour," says native islander Tuff. "The location became available."

The group shows a strong teamwork dynamic. "Everyone has a sense of the common good," says Schock as the others nod. "We respect each other as artists."

The gallery's placement, complete with a view of the harbor, affords that activity. Pedestrian traffic

in front of their window includes residents, tourists and boaters. "We get people from the Newport ferry as well," Schock adds. Not only does it provide a permanent showcase for the five founding artists, but the gallery also provides a space reserved for exhibits featuring artists from the Jamestown Arts Center.

The dedicated wall allows visitors to see all the talent in Jamestown as the exhibit revolves every two weeks.

Not only does it provide a permanent showcase for the five pro-

fessional artists, but the gallery also provides a space reserved for exhibits featuring artists from the Jamestown Arts Center. The dedicated wall allows visitors to see all the talent in Jamestown as the exhibit revolves every two weeks. "David is very much about the community," says Petrie. "He was very happy to give some space for it." Petrie is president of the arts center, and Barbara Hutchinson is on the board of directors.

The JAC doesn't have a building now, but the gallery gives it a public

forum, she explains. "It's a nice way to get a public venue for this budding arts center. JAC rents a regular wall space from the gallery, and then it's free for the artists to show their work. Half of the sales then go to the Jamestown Arts Center. I think it's a really friendly arrangement."

Over a half-dozen JAC members have exhibited at the waterfront since the gallery opened. Jane McNally Wright just closed a showing of mono prints. Sculptor Jillian Barber has new creations on display.

The five principal artists price their gallery pieces from \$50 to \$15,000. In addition to artwork on display, the artists all do commission work. For example, Schock is internationally known for his portrait work of families at the shore.

The gallery has shown exhibitions that expand beyond the island's borders, as well. The May "Artist's Travels" show, for example, displayed art inspired by international roaming. The artists have come to realize, nevertheless, that many visitors look for local themes. In response, bridges, cows and flying Veteran's Day flags are featured the walls during the current "Celebrate Summer" exhibit.

The artists of the gallery rotate their pieces on display, so they invite everyone to stop by often at 47 Conanicus Ave. They love to chat, and they invite questions about their craft. Summer gallery hours are daily noon to 5 p.m., and Thursday through Saturday until 9 p.m. and by appointment. For more information, call 423-3383, or visit online at www.schockgallery.com.

JAMESTOWN GEMS

STUNNING WATERFRONT JEWEL



Magnificent water views mesmerize you from this graceful, 4,857 sq. ft. custom home. On .70 acres, with 106 ft. of beach frontage, a dock and moorings, the three-bedroom, six-bathroom home has dramatic living spaces, a fabulous curved window wall, chef's kitchen, library, gorgeous master suite with his and her bathrooms and, a downstairs media/game room that opens to the water. \$3,399,000

SPARKLING SEASIDE



Sweeping water views delight you from this 4,226 sq. ft. home with 75 ft. of beach front on the West Passage. On an 11, 625 sq. ft. lot, this striking 4-bedroom, 4-bath home has an open floor plan, living and family rooms with fireplace, master suite with fireplace, and walk-out waterside lower level, and mooring. A dock application is pending. \$2,400,000

SHINGLE-STYLE ELEGANCE



Beautifully sited on an acre close to Mackerel Cove, with deeded rights to members-only Green's Pier/Beach, this sunswept, warm and inviting 4,800 sq. ft., five-bedroom home has classic custom details, spacious rooms, two fireplaces, a covered porch and a 15' x 45' in-ground pool. \$1,850,000

GORGEOUS HIGHLAND MEADOW



Close to town and Mackerel Cove, this handsome 4,500 sq. ft. shingle-style home has lovely exterior detail, beautiful interior finishes, a fabulous kitchen, wonderful sun room, three fireplaces and, a master bedroom suite with a deck. A lower level living area has a bedroom, bath and media room. A detached two-car garage has a separate office. \$1,795,000

WEST REACH WATERVIEW GEM



Beautiful Narragansett Bay views are enjoyed from this tastefully finished 3-bedroom, 3 1/2 bath contemporary with a fabulous kitchen, great room with fireplace, entertainment deck and, gracious master suite. Set on a park-like 1.85 acres, the house borders Rosamond Pond and has deeded beach rights, \$1,495,000

CLASSIC SHOREBY HILL COTTAGE



Wonderful chance to renovate and restore an early 1900's cottage on a beautiful, 24,394 sq. ft. lot. The 2,500+ sq. ft. 4-bedroom home has an inviting covered porch, sunroom, sleeping porch, stone-fireplaced living room, formal dining room, spacious eat-in kitchen and lovely grounds. \$1,150,000

EAST PASSAGE WATERFRONT LOT



Gorgeous sunrises, moonrises and Newport Bridge views are yours from this .57 acre waterfront lot with about 65 ft. of beach frontage on the East Passage. The vacant land has a free-standing garage, new well and approved 4-bedroom ISDS. Unique chance to build your dream house. \$1,195,000

CAPTIVATING SHORES CHIC



Beautifully renovated, three-bedroom landscaped home is set on a lovely .39 acre site close to the beach. Dramatic living room with cathedral ceilings, granite-faced fireplace, tastefully finished custom kitchen with granite counters and new first floor master suite. \$699,500

CHARMING PEMBERTON RANCH



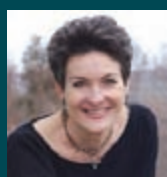
On almost .50 acre, this, 2,152 sq. ft. home has a fenced back-yard and 2-car garage. The unique investment opportunity has a two-bedroom, two-bath front unit and a one-bedroom rear unit with cathedral ceilings and skylights. \$650,000

BEAUTIFUL BUILDING SITE



"TOP 'O THE MARK". JAMESTOWN SHORES. This private 1.46 acre lot is bordered on two sides by a stone wall. Protected by a deeded natural buffer from neighboring properties to the east and south, it has an irrigation well on-site. ISDS engineering to be obtained before closing. \$375,000

"WE MAKE DREAMS COME TRUE, ONE HOME AT A TIME"



Gloria Kurz
Principal

REALTORS
Greer Beecroft
Michelle Datoli
Maureen Dunn-Packer

Cort Facticeau
Cathy Kennedy
Jackie Perrett

**Mansions
& Manors**

The Personalized Real Estate Service

www.mansionsmanors.com

7 FERRY WHARF
JAMESTOWN, RI 02835
401.423.7000

59 BELLEVUE AVENUE
NEWPORT, RI 02840
401.848.5555